



OFFICE OF THE VICE PRESIDENT OF  
THE REPUBLIC OF INDONESIA



# Social Protection **for Children**

---

**Office of The Vice President The Republic of Indonesia/  
The National Team for the Acceleration of Poverty Reduction (TNP2K)**

January 2019

# Outline

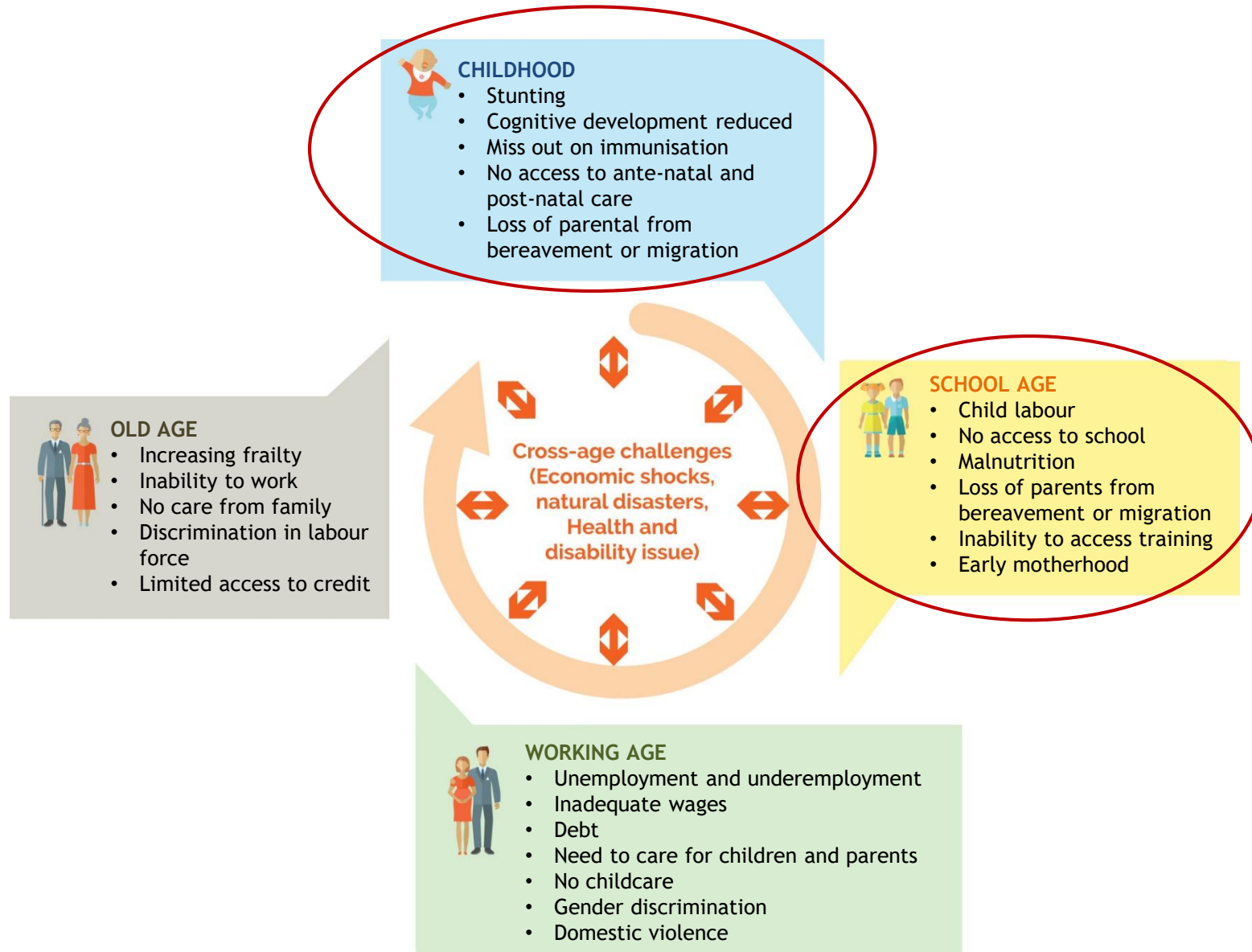
- 1. Economic, Social and Demographic Context** Page 52-57
- 2. Social Protection Programs for Children** Page 68-70, 73-78, 85-87
- 3. Recommendation for the Future of Social Protection for Children** Page 94-100

# 1

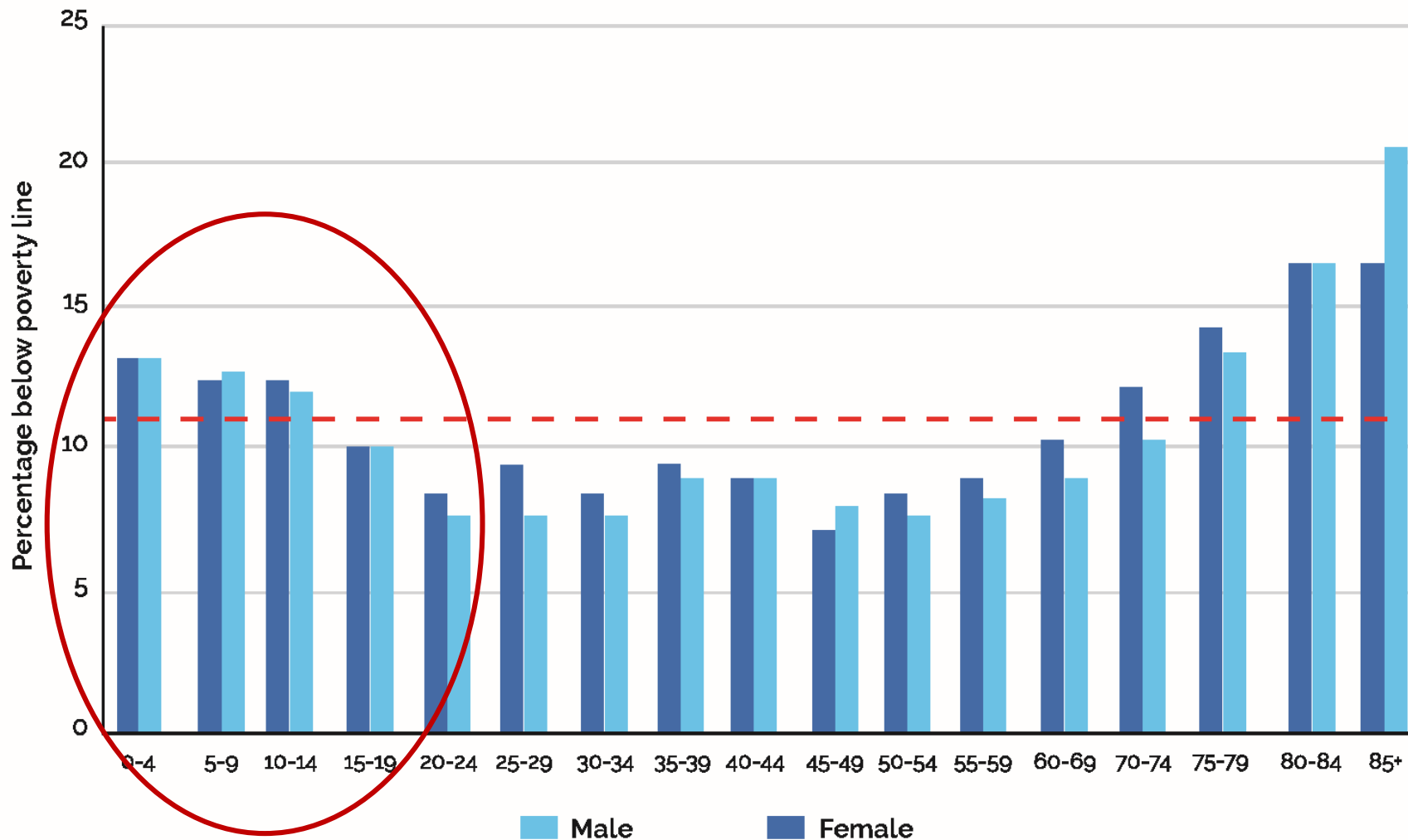
---

## Economic, Social and Demographic Context

# Risks and Challenges in the Lifecycle



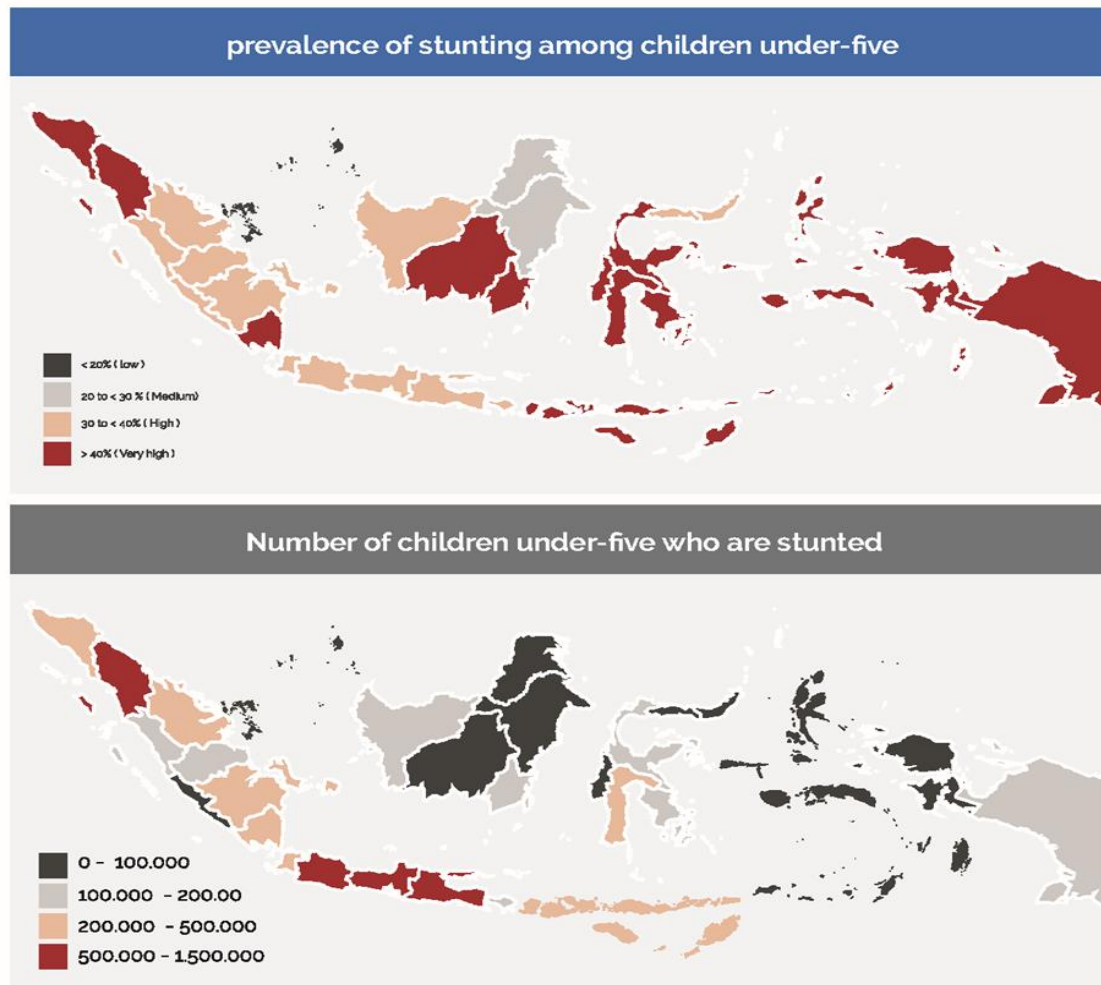
# Percentage of the population below the national poverty line, by age groups, Indonesia, 2017



Note: - - - - Official BPS poverty line = IDR11,994 per person per day

Source: Susenas (March 2017)

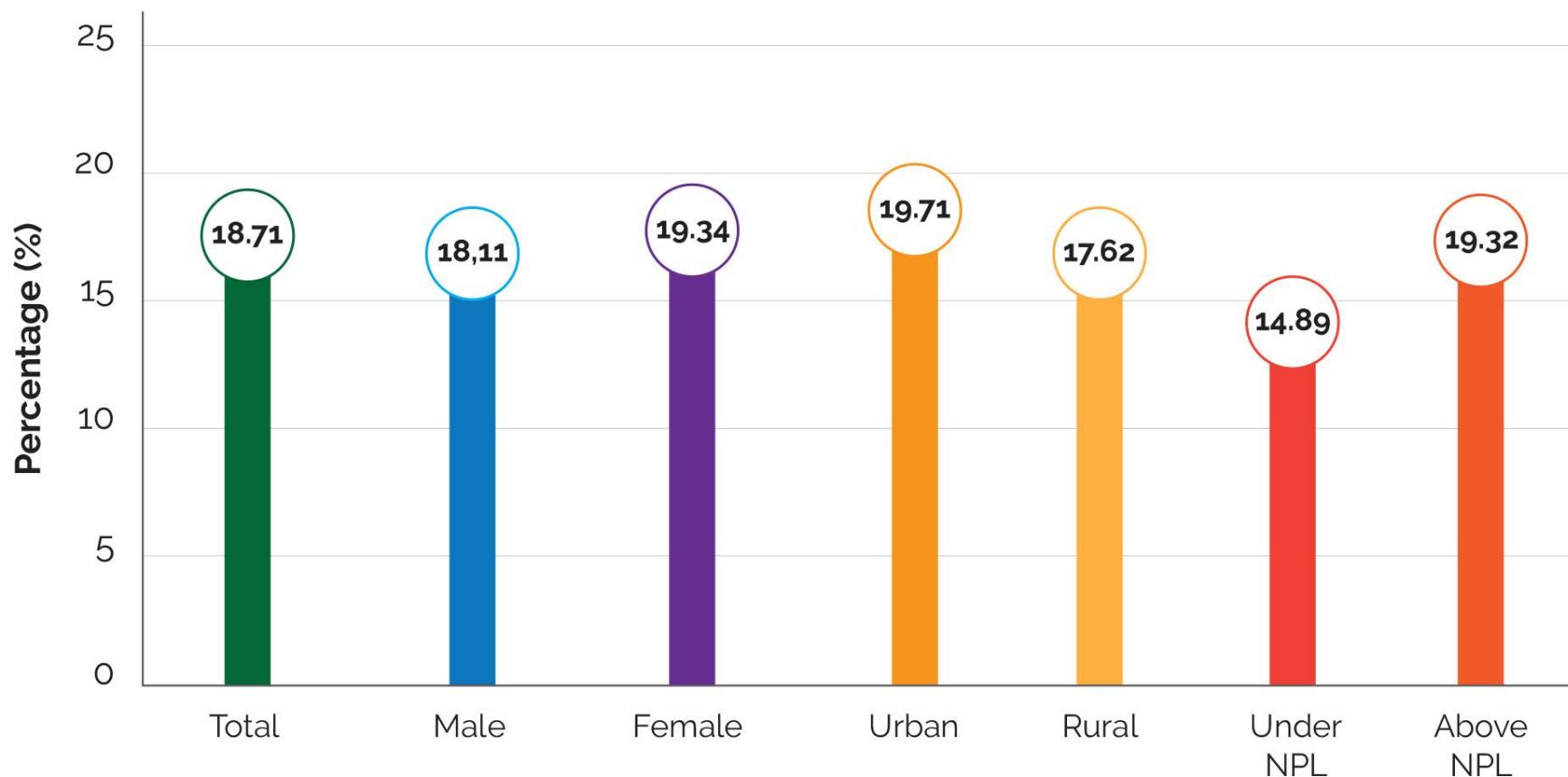
# Proportion and number of children under five who are stunted in each province



Source: Riskesdas (2013)

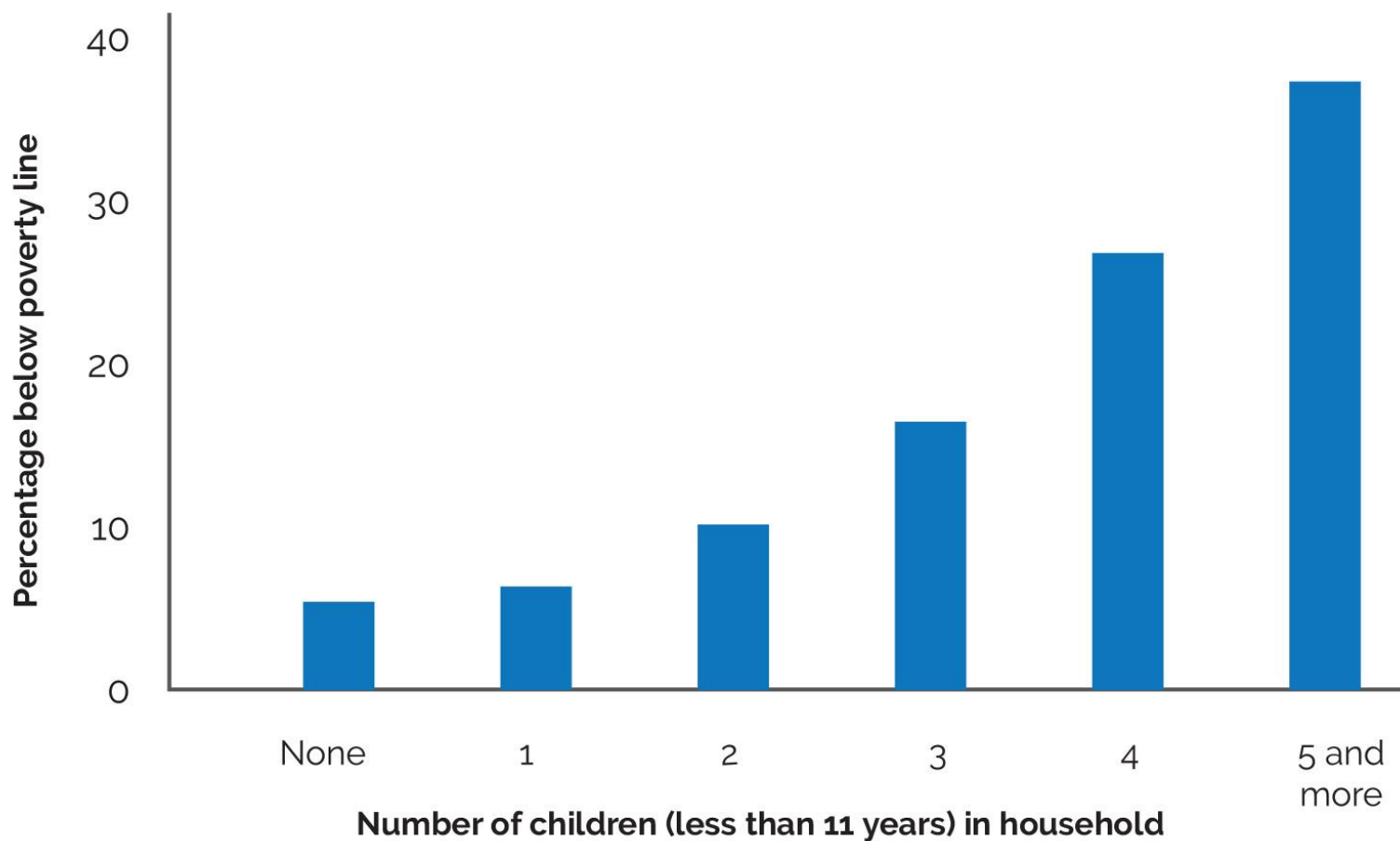
Source: Riskesdas (2013)

## Percentage of children under five who attended some form of early childhood education, 2017



NPL = National Poverty Line  
Source: Susenas (March 2017)

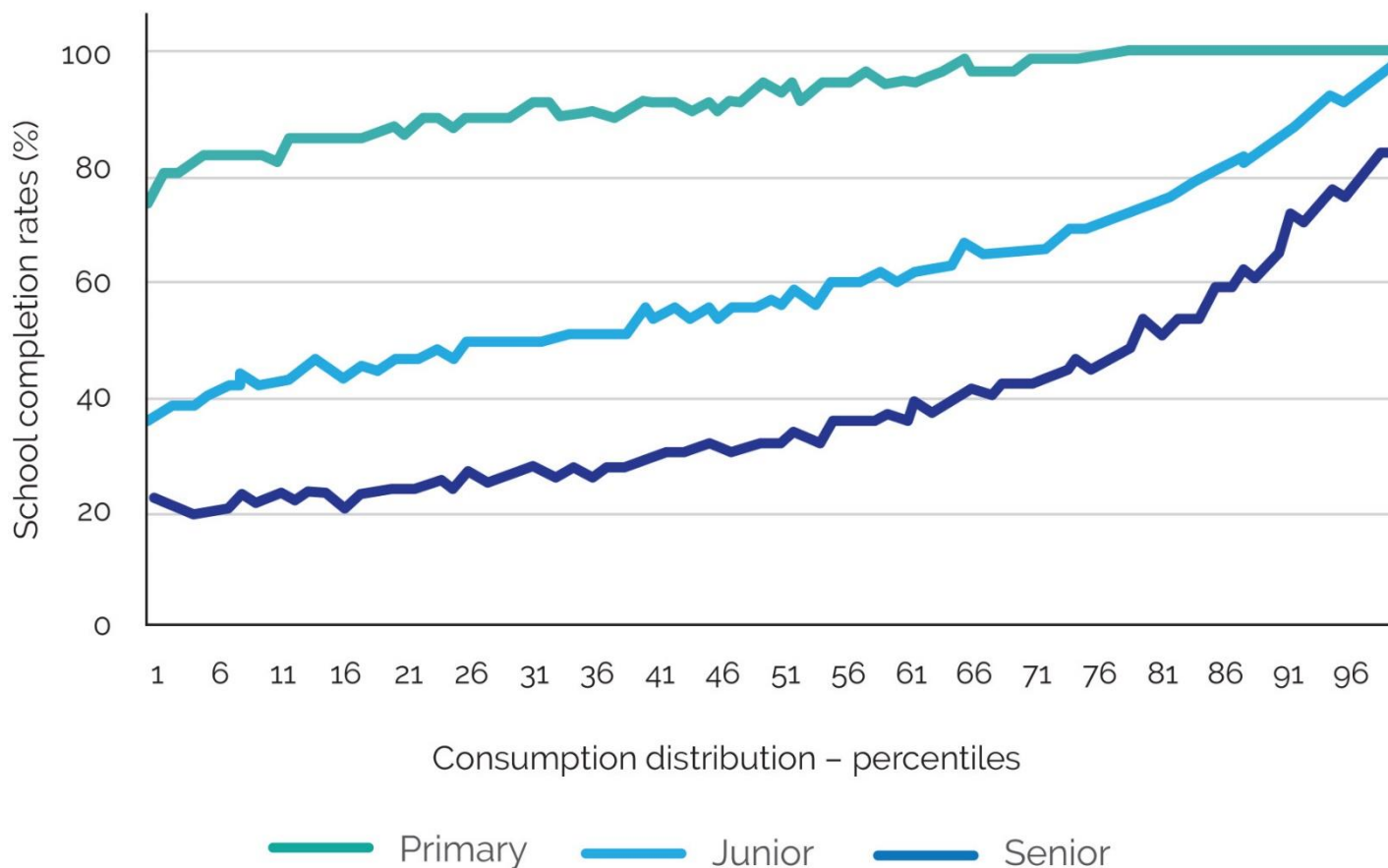
## Poverty rates linked to number of children in the household



Official poverty line = IDR11,994 per person per day  
Source: Susenas (March 2017)



## Primary, junior secondary and senior secondary school completion rates across the consumption distribution, 2017



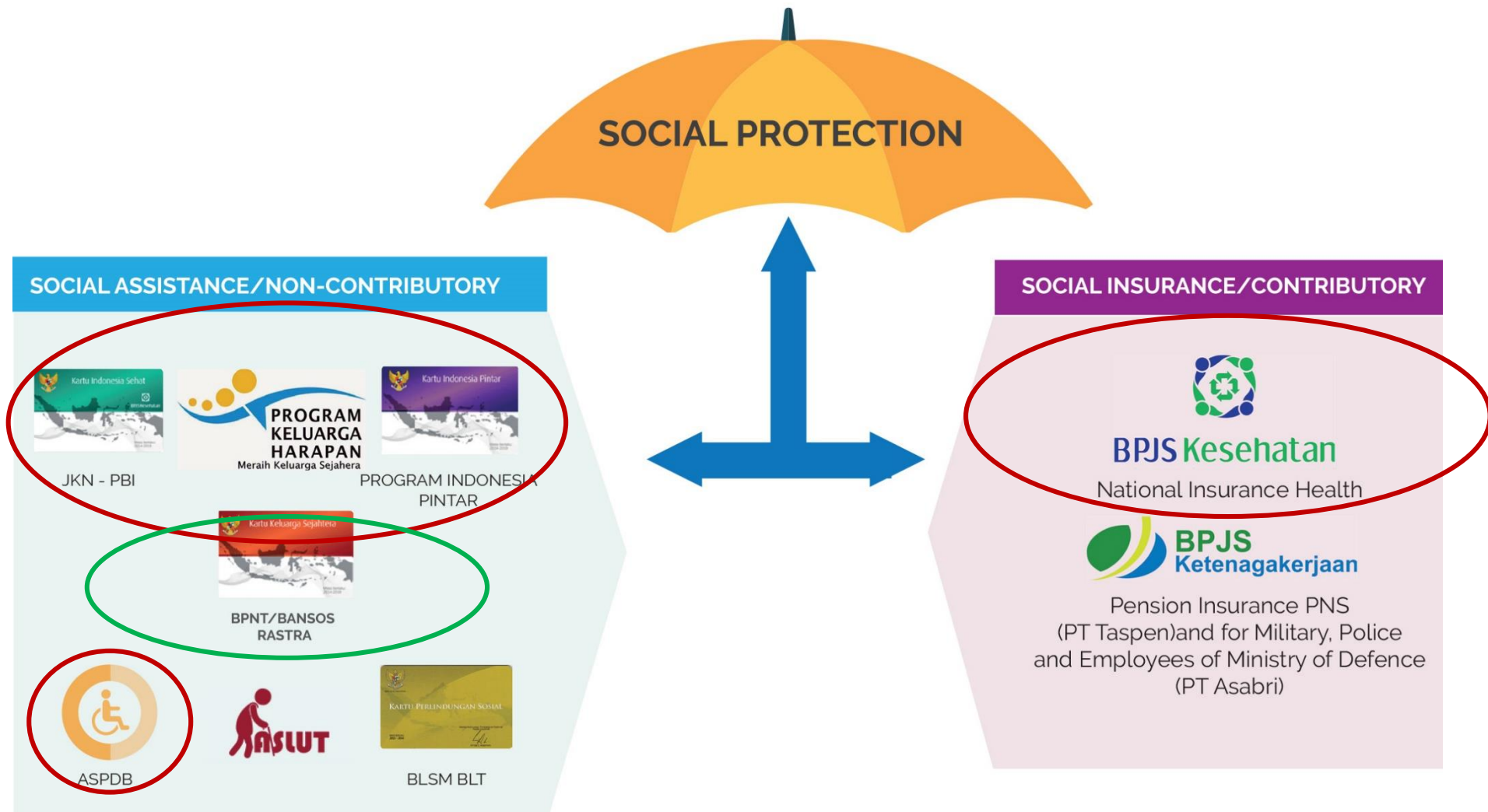
Source: Susenas (March 2017)

# 2

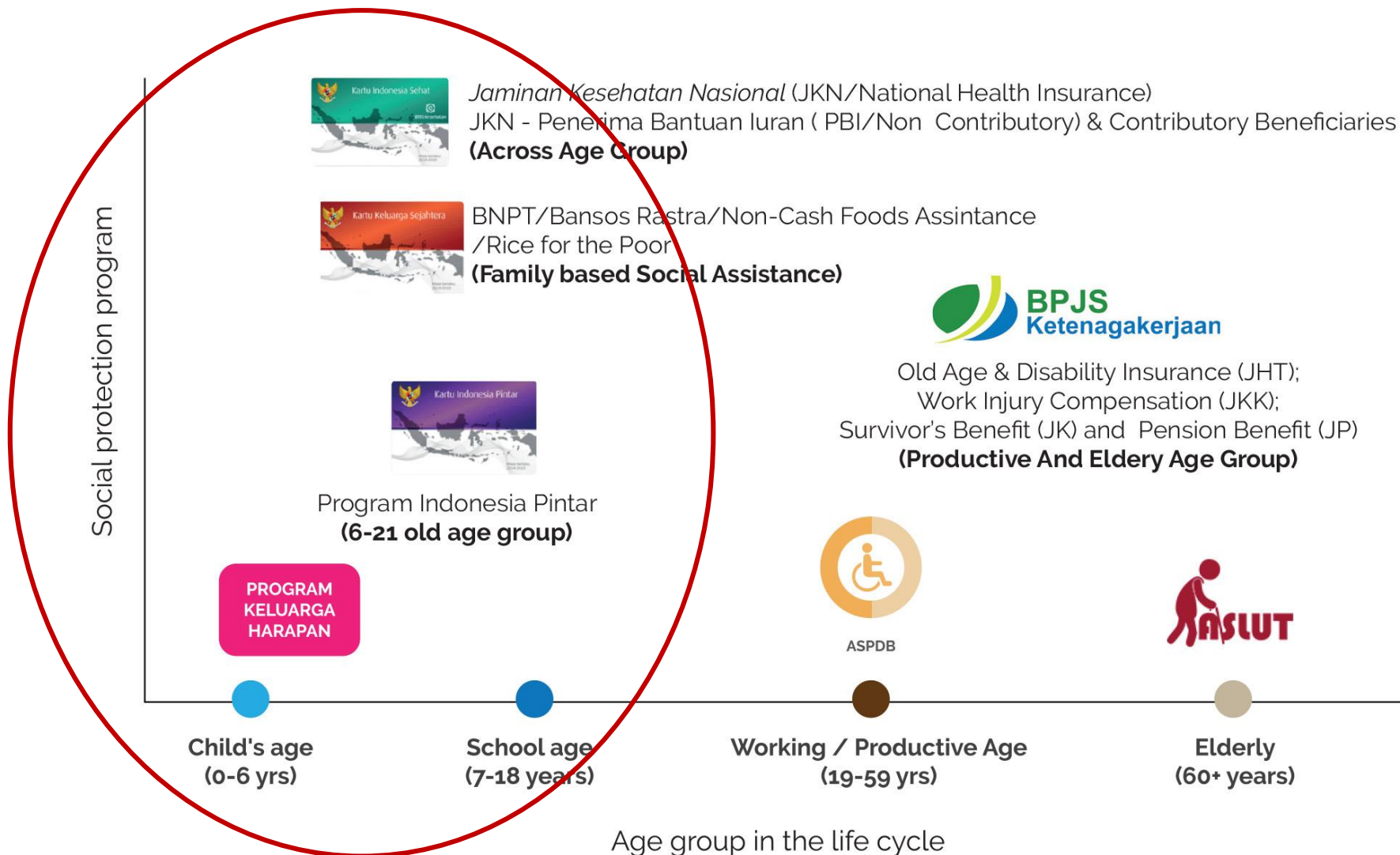
---

## Social Protection Programs for Children

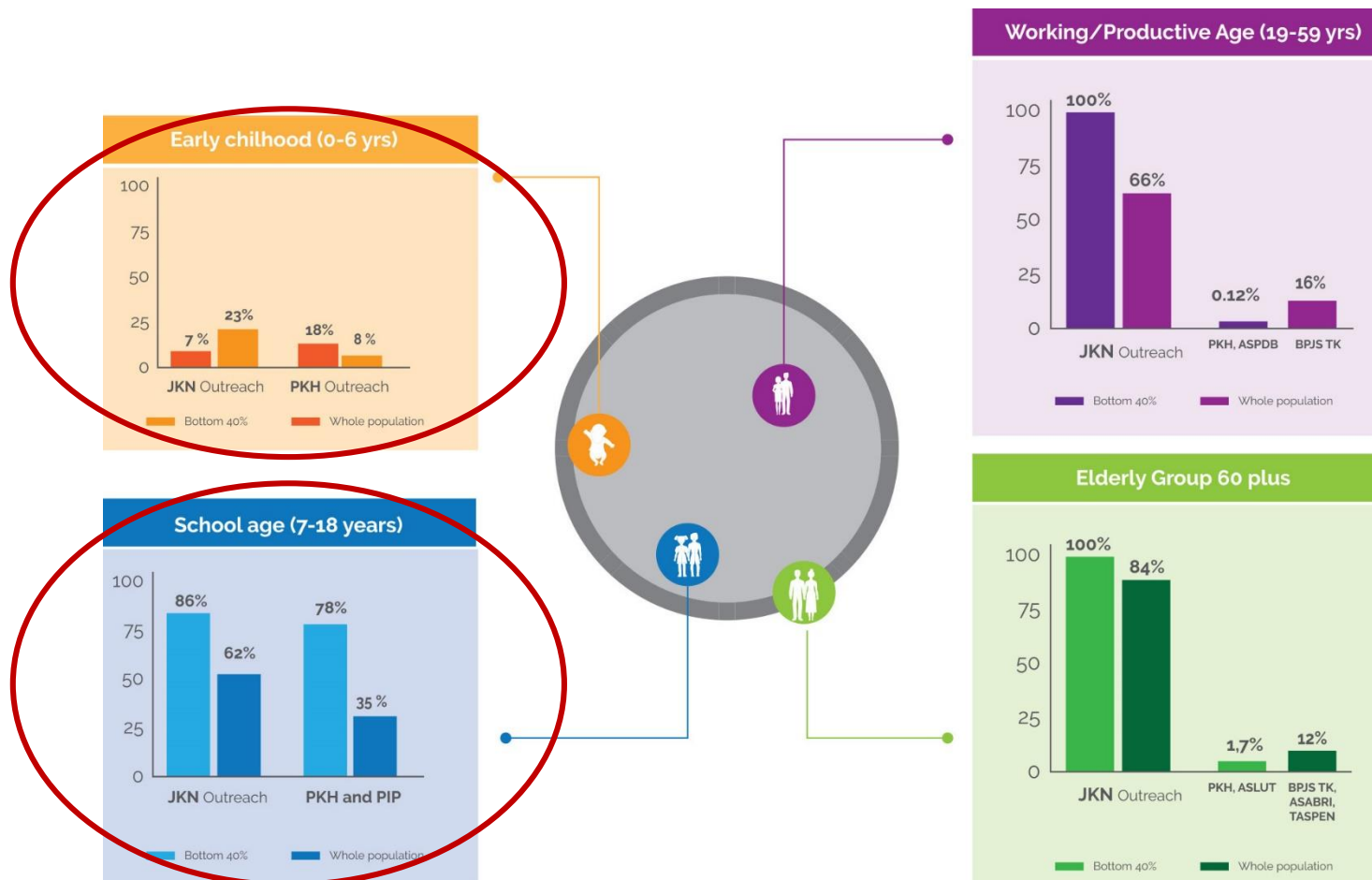
# Indonesia's Existing Social Protection System



# Social Protection Programs in Indonesia across the Lifecycle



# Indonesia's Social Protection Across the Lifecycle, bottom 40 Per Cent and All of the Population, 2017 (in percentages)

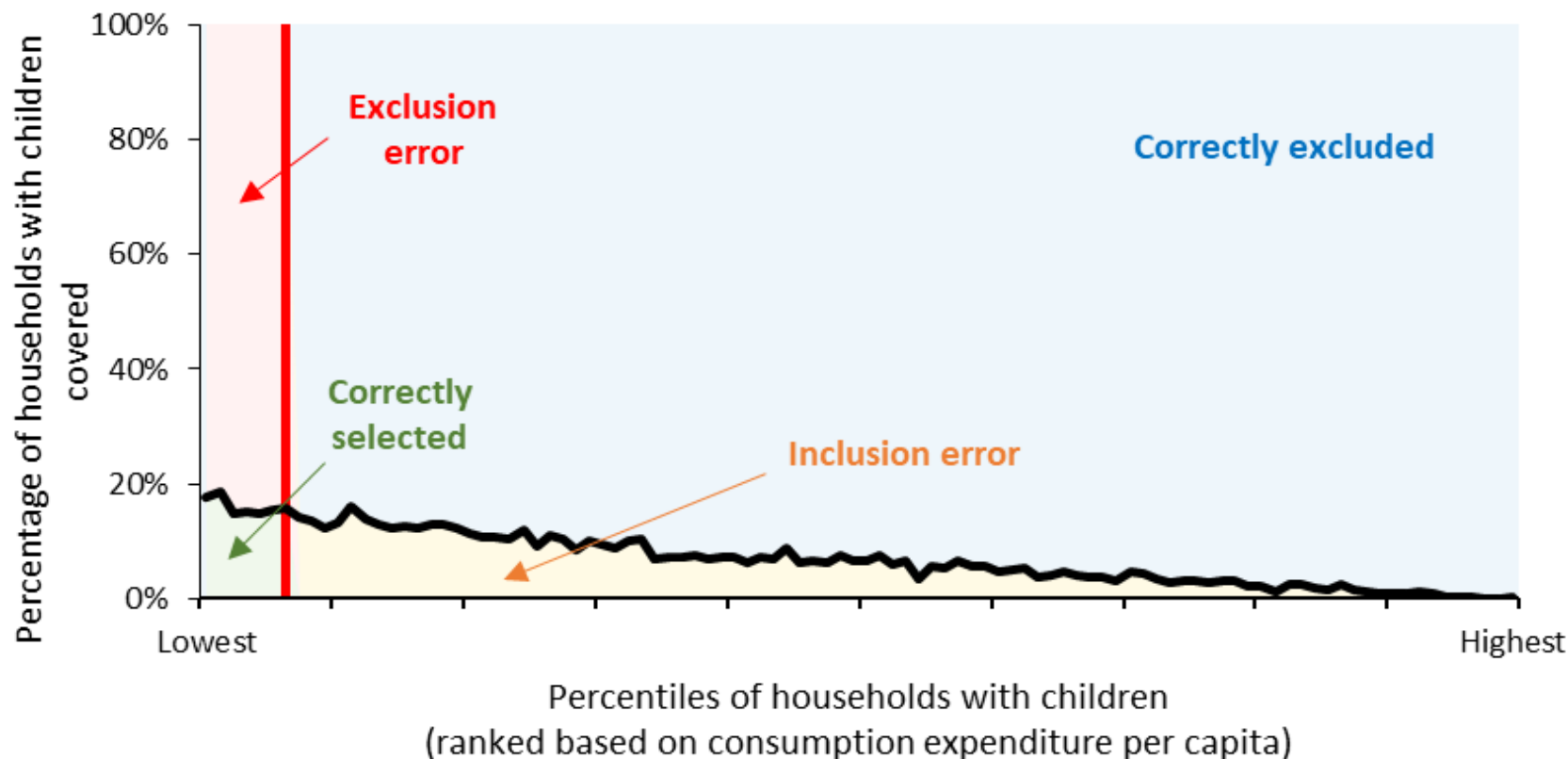


Source: Susenas 2017 and 2017 program administrative data - compiled and calculated by TNP2K (2018)

Notes:

- The percentage calculation of PKH and PIP outreach in the early childhood and school age groups assume perfect targeting among the poorest 40% of households.
- For the contributory schemes, the coverage among the elderly and productive age groups only represents contributions made into the schemes as there are very limited benefit pay-outs to date.

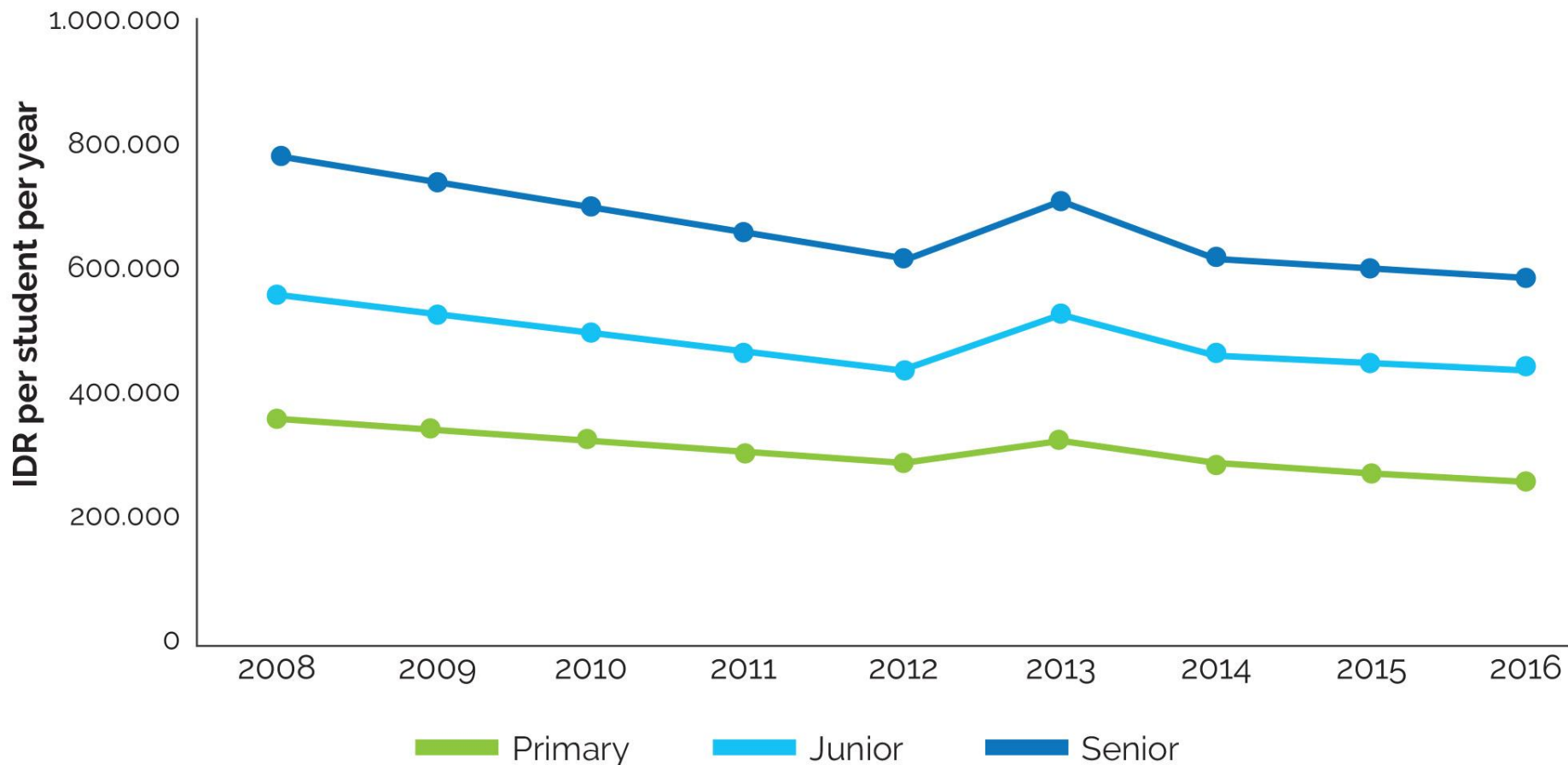
# Targeting effectiveness of PKH, 2017



Note: Coverage is measured among households with children. The red line represents the total proportion of all households receiving PKH. The black line shows the proportion of households receiving PKH (Y-axis) disaggregated by percentile (X-axis).

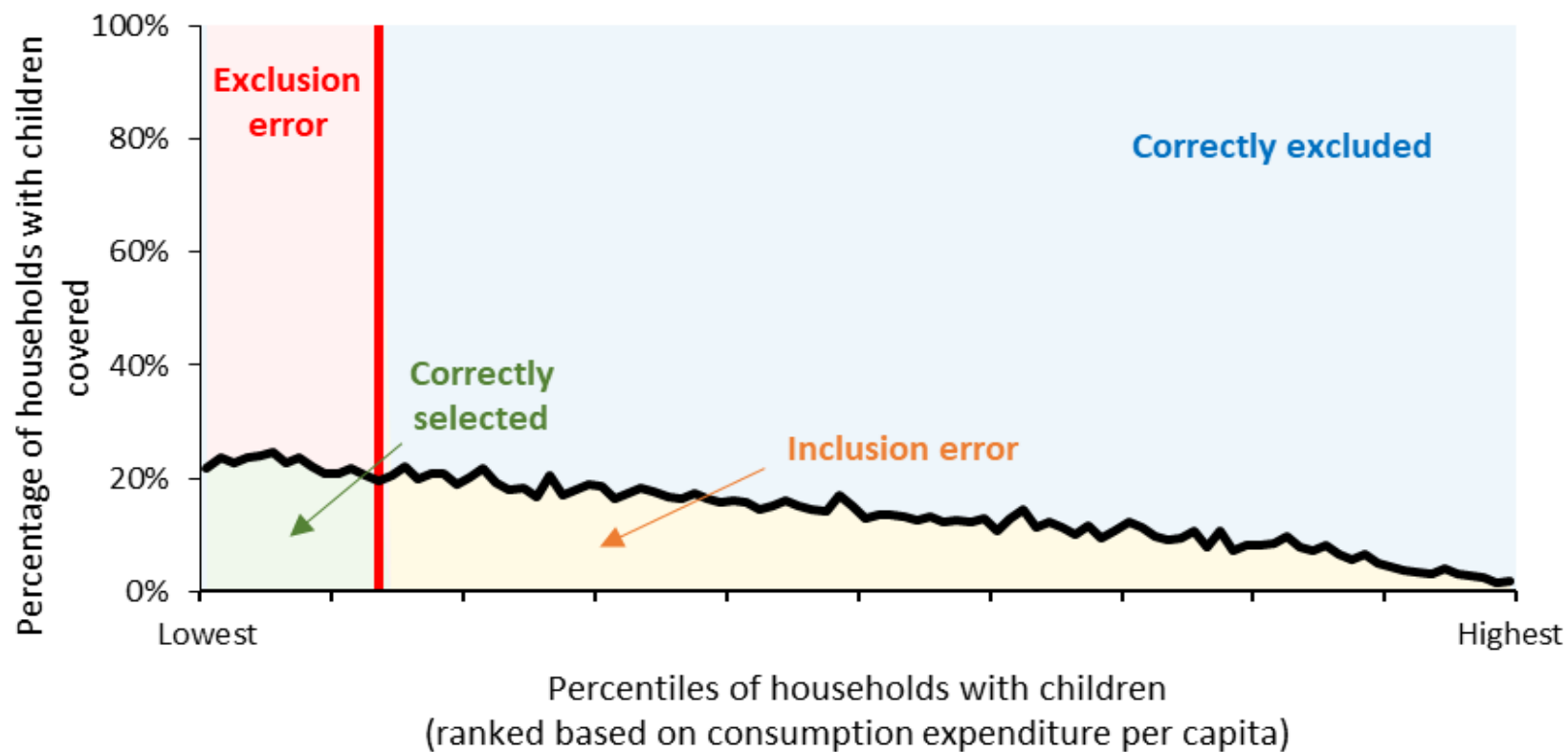
Source: Susenas (2017), [calculated by TNP2K-Mahkota 2018](#)

## Change in the Value of PIP Transfer (adjusted to inflation), 2008 - 2016



Source: World Bank (2017)

# Targeting effectiveness of PIP, 2017



Note: Coverage is measured among households with children aged 6-21 years. The red line represents the total proportion of all households receiving PIP. The black line shows the proportion of households receiving PIP (Y-axis) disaggregated by percentile (X-axis).

Source: Susenas (March 2017), calculated by TNP2K-Mahkota 2018

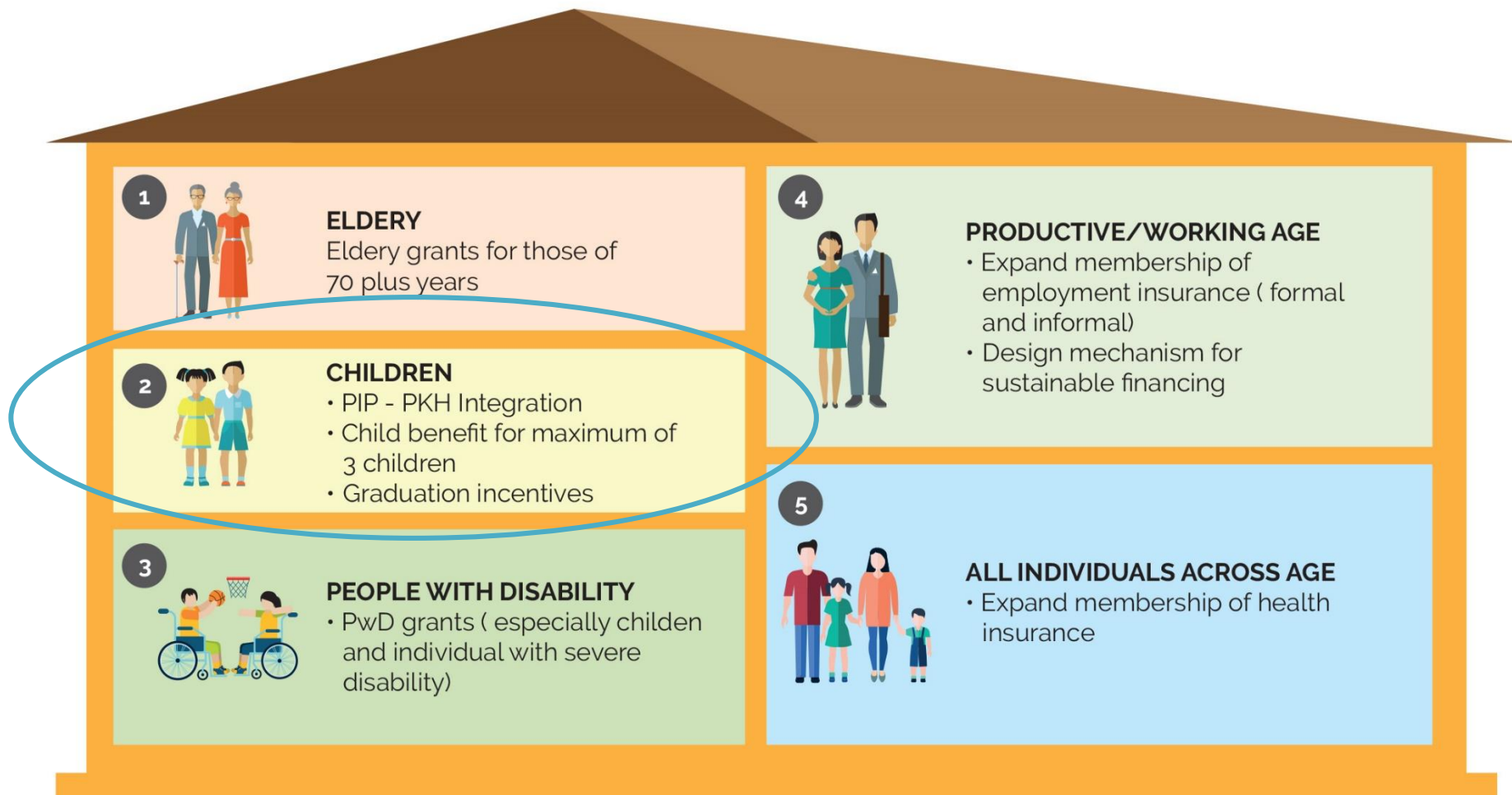


# 3

---

## Recommendation for the Future of Social Protection for Children

# Proposed Reforms in the National Social Protection System, 2020-2024



## **Options** Values of Child Benefit and Graduation Incentives

**Child Benefit per child per month:**

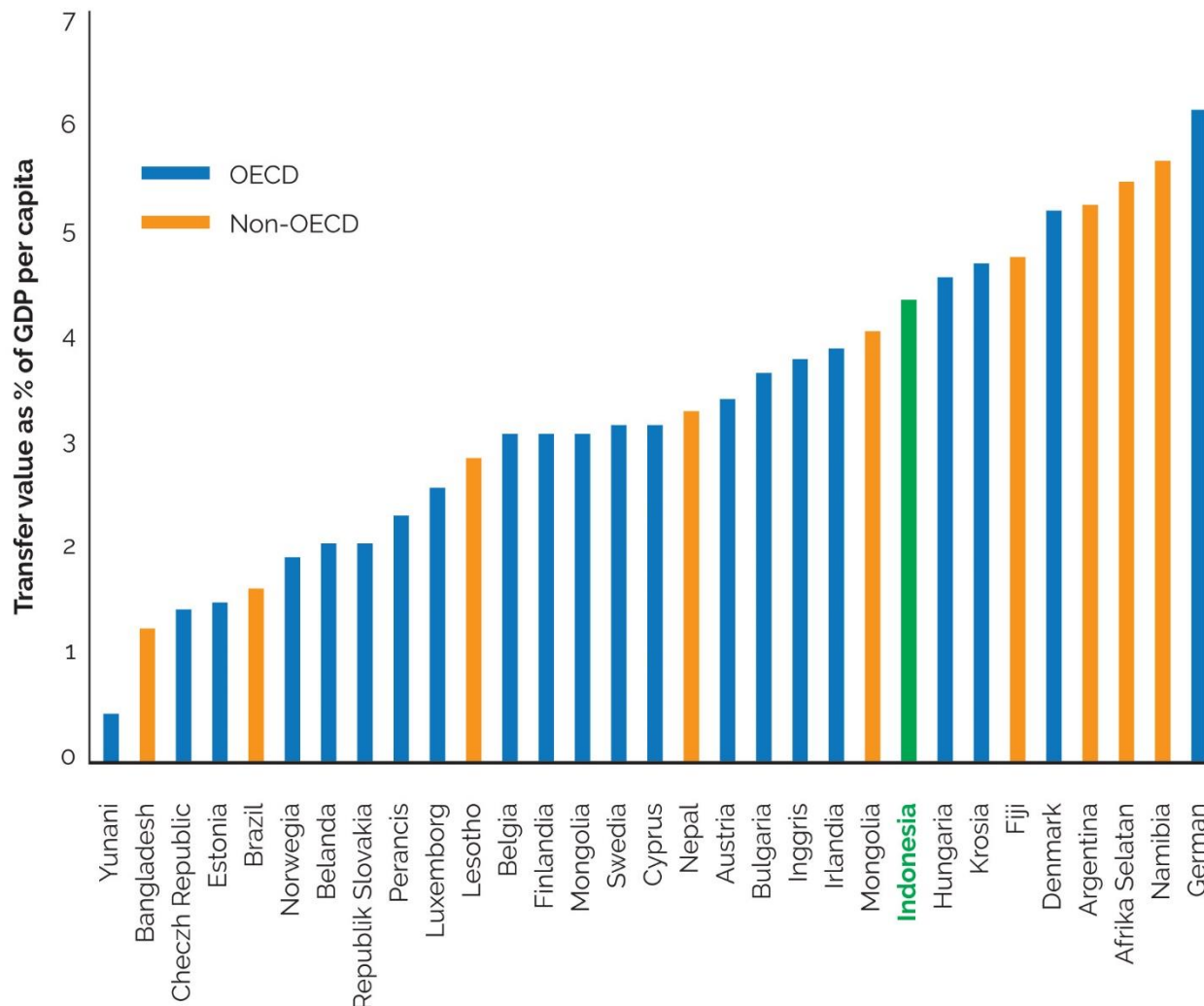
- **IDR200,000**
- **IDR300,000**
- **IDR400,000**

**For a maximum of 3 children (included baby in the womb)**

**Graduation Incentives, one time when the child:**

- Entering Grade 7: **IDR750,000**
- Entering Grade 10: **IDR1,500,000**
- Graduated from Grade 12: **IDR3,000,000**

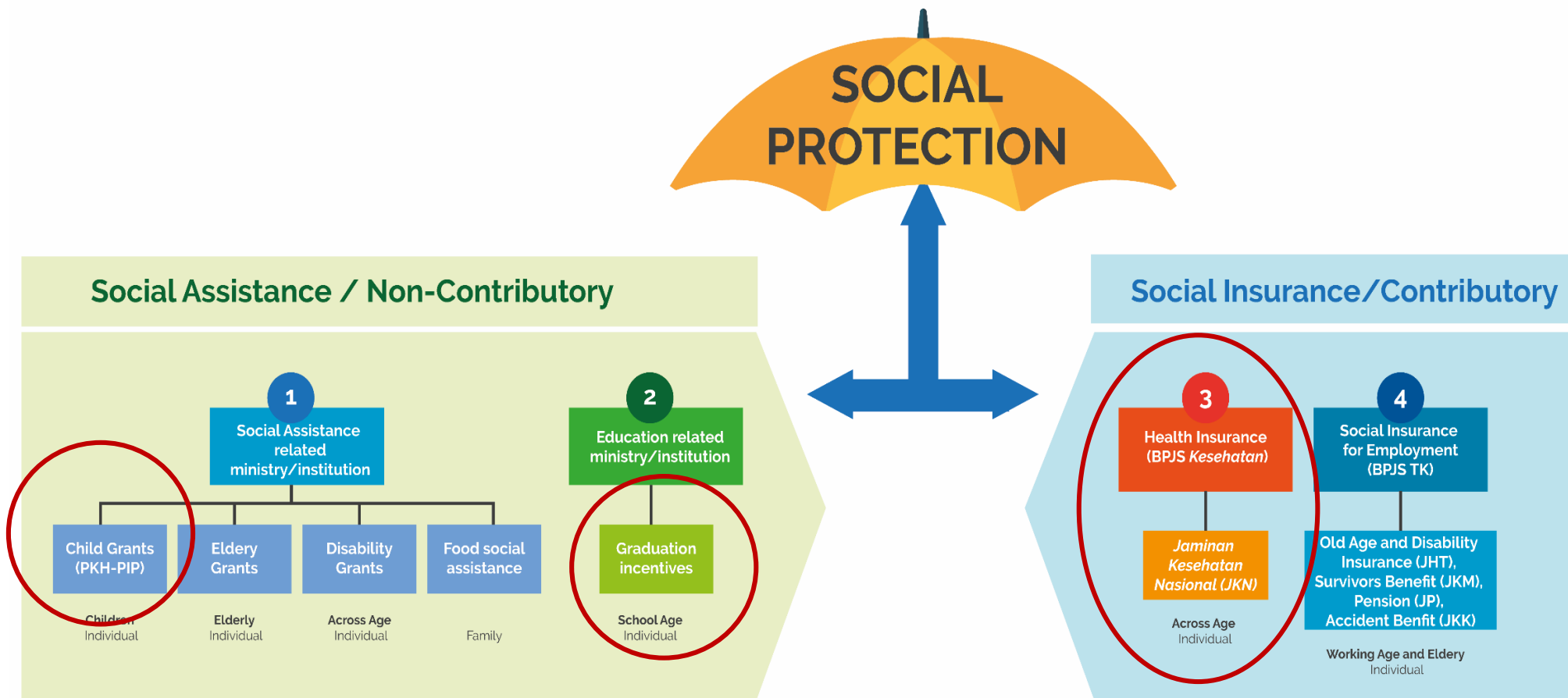
## Value of Indonesia's proposed child benefit, compared to similar schemes in selected countries worldwide, as a percentage of per capita gross domestic product



OECD = Organisation for Economic Co-operation and Development

Source: Compiled from different sources

# Social Protection System's Reformed Proposed Institutional Structure, 2020-2024



**Thank You**

---

