

USING THE UDB TO IMPROVE HOUSING FOR THE POOR

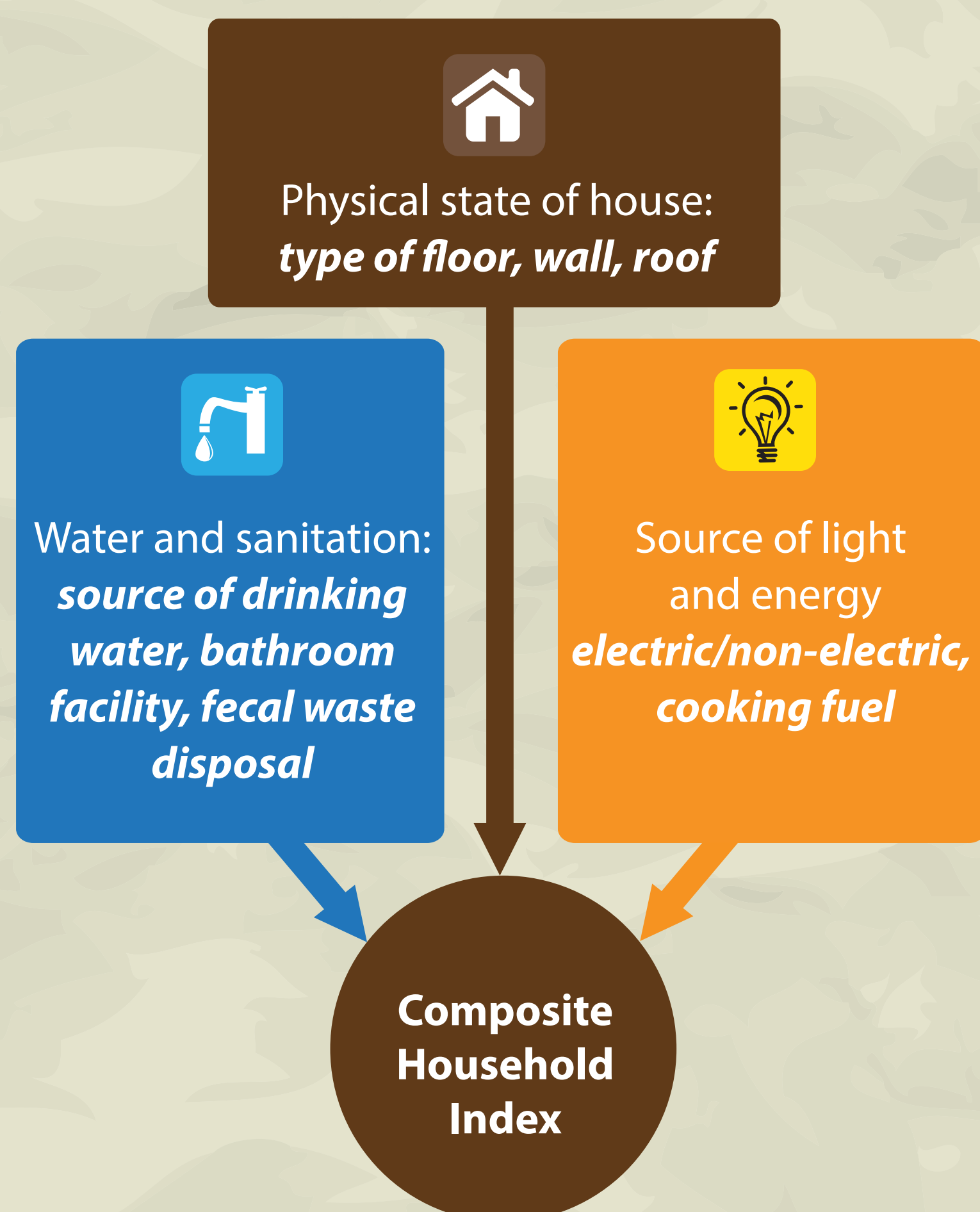


1 million poor households hold a **Social Protection Card (KPS)**

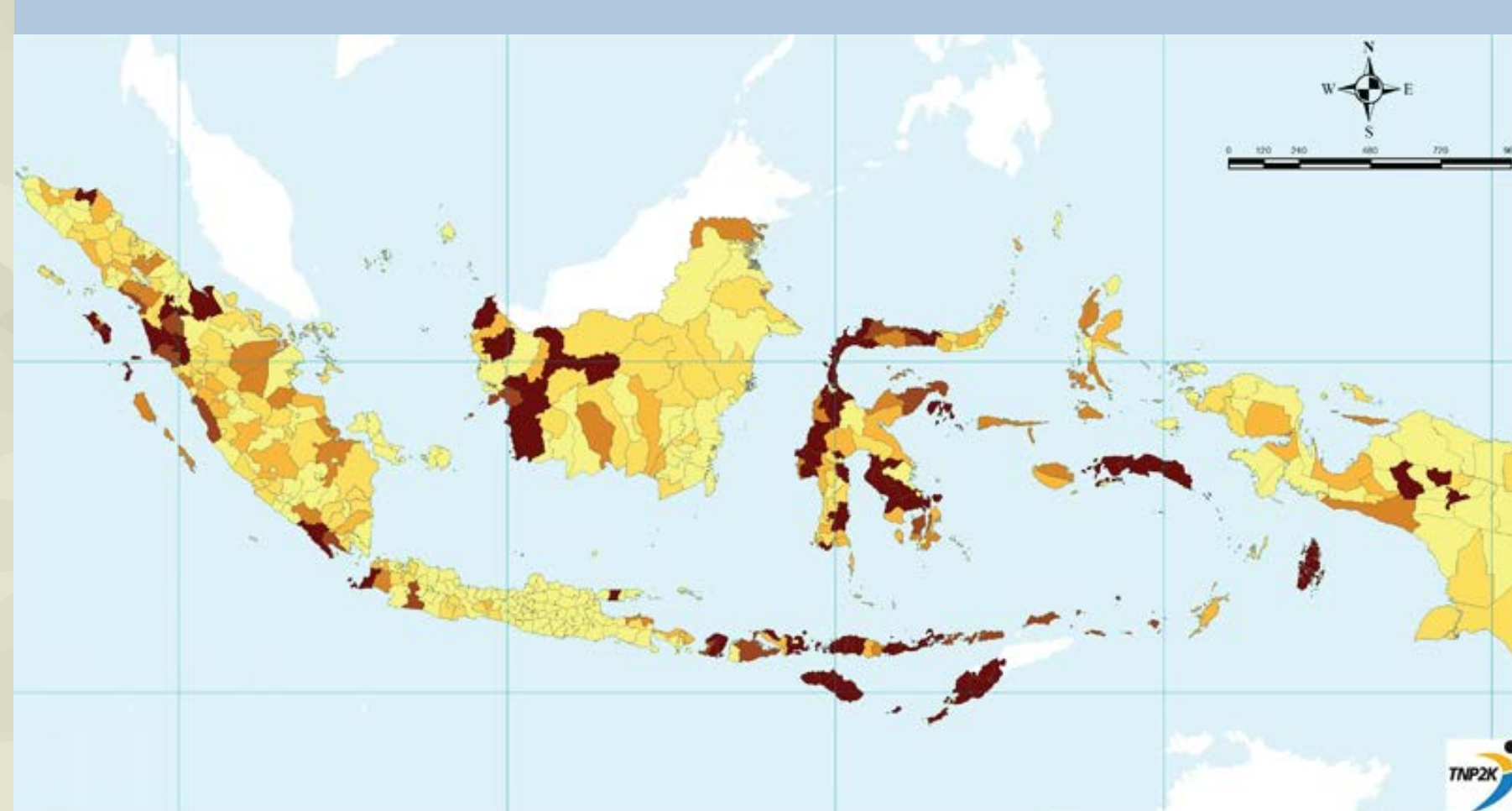
1

Based on condition of house owned

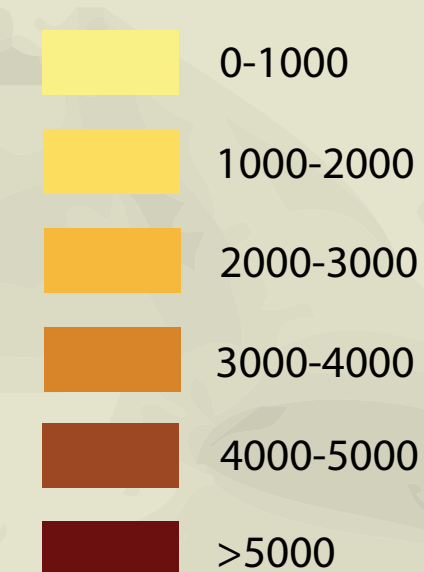
CREATING A COMPOSITE HOUSEHOLD INDEX



SEBARAN PEMEGANG KPS BERDASARKAN KONDISI RUMAH



Legend:



Source: BDT, TNP2K

THE INDEX IS FOR MED BASED ON GENERAL CHARACTERISTICS OF THE POOREST HOUSEHOLDS

- 1 | Wall: bamboo
- 2 | Roof: zinc
- 3 | Floor: soil
- 4 | Source of drinking water: unprotected spring
- 5 | Toilet facility: none
- 6 | Fecal waste disposal: beach/soil/field/garden
- 7 | Source of light: flashlight/torch
- 8 | Cooking fuel: firewood

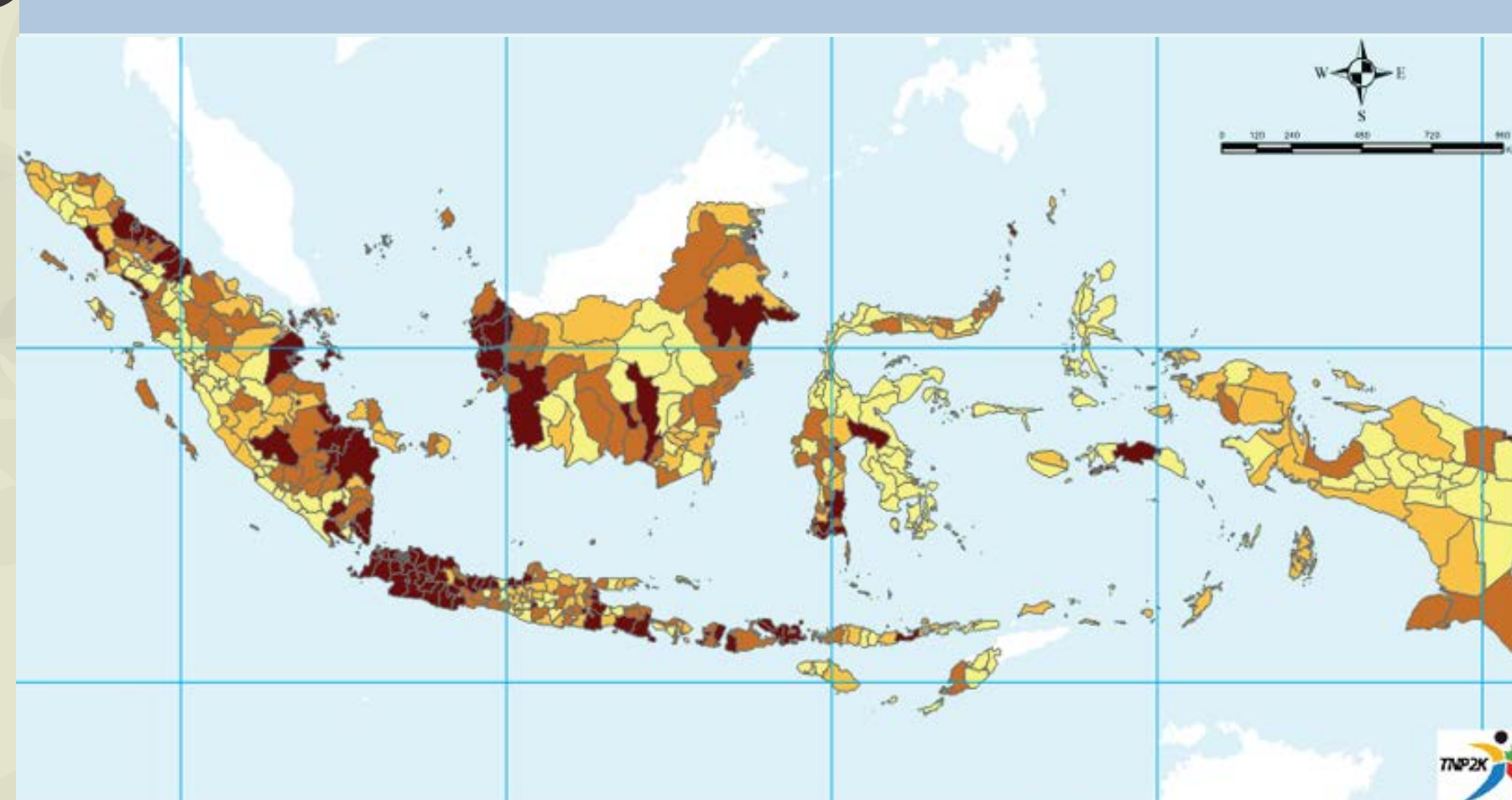
2

KPS Holders living in **Slums**

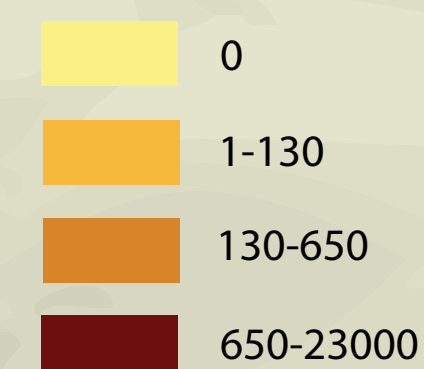
CHARACTERISTICS OF SLUMS

- 1 | Overcrowded
- 2 | Substandard housing
- 3 | Poor sanitation

DISTRIBUTION OF KPS HOLDERS LIVING IN SLUMS



Legend:



Source: BDT, TNP2K